

PartnerLinQ

REVOLUTIONIZE YOUR LOGISTICS AND TRANSPORTATION BUSINESS WITH PARTNERLINQ



www.partnerlinq.com

In times of market compression, marked by national and international mergers and acquisitions, seeking growth often becomes a race to consolidate services while maintaining a competitive edge. To keep pace with market demands and stay ahead of the competition, embracing digital transformation is a necessity, especially to take advantage of the opportunities presented in such turbulent times.

Transformation is necessary and is how businesses survive and plot their journey towards a new level of maturity. That road to a more mature model begins with bolstering connectivity and improving real-time visibility, an inevitable path, pivotal to unlocking new opportunities.

Whether dedicated or one-way, LTL or truckload, cross-border, flatbed, inter-modal, temperature-controlled or both thriving in this dynamic environment relies on connectivity, visibility, and insight based on experience. Insight that delivers intelligent decision-making support alongside a comprehensive view of operations.



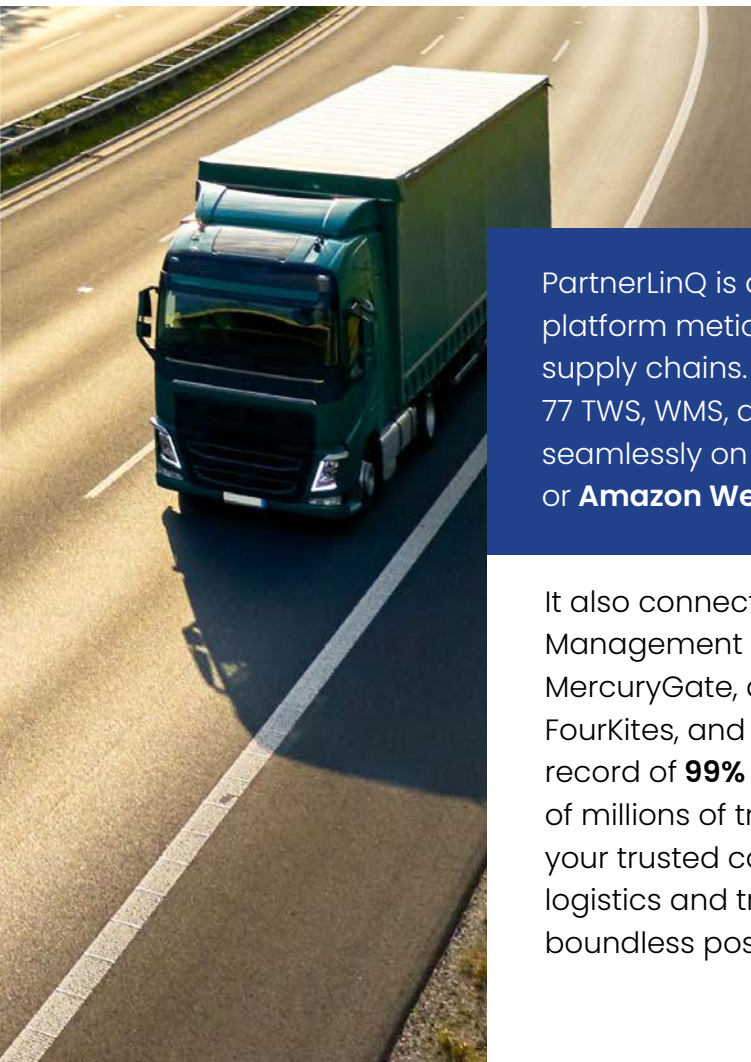
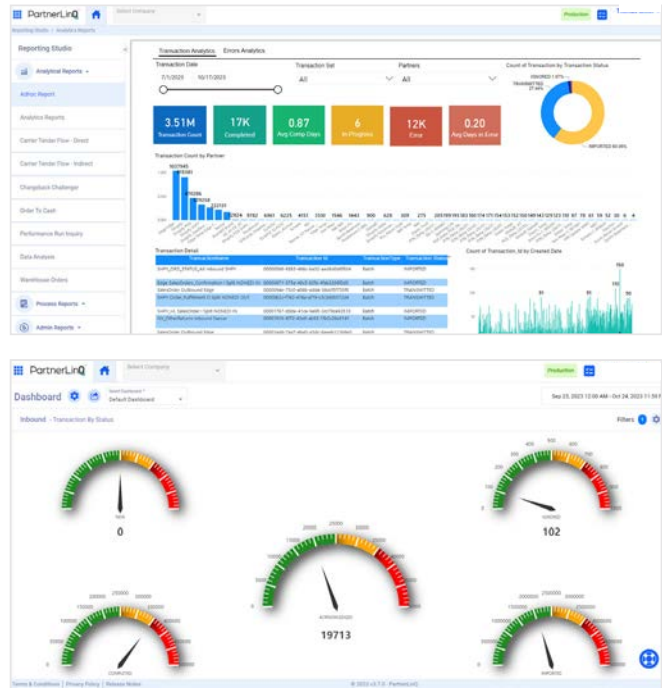
The right platform empowers logistics and transportation companies, so they are capable of responding to market shifts, taking advantage of insight to proactively steer themselves towards an innovative business practice armed with enhanced operational efficiencies. The right platform works with these companies daily creating this robust digital backbone for business. The right platform is a robust flexible platform, one that enables seamless automation of core processes, one that supports a cacophony of operations, one that drives informed decisions, and reduces turnaround time, one that offers robust exception handling and addresses operational challenges promptly, one that fosters an environment of continuous growth and improvement in a highly competitive and global landscape.



Introducing PartnerLinQ – a unified supply chain platform to resolve your connectivity and visibility challenges:

Built for industry experts, PartnerLinQ stands out as the premier supply chain platform, paving the way for seamless adaptation to API and EDI integration and empowering your business with real-time operational visibility. It orchestrates data flows across a wide spectrum of customers, carriers, trading partners, and core business applications, redefining digital connectivity, end-to-end visibility, and decision intelligence. Constructed on a resilient technology infrastructure.

PartnerLinQ remains unmatched in control and agility, adeptly navigating change and propelling your business forward.



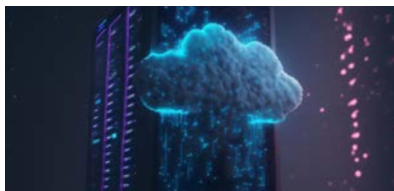
PartnerLinQ is a first-of-its-kind, cloud-native, composable platform meticulously crafted to adapt to the unique needs of supply chains. Offering seamless integration with more than 77 TWS, WMS, and enterprise level systems, PartnerLinQ works seamlessly on **Google Cloud Platform (GCP)**, **Microsoft Azure**, or **Amazon Web Services (AWS)**.

It also connects effortlessly with leading Transportation Management Systems such as McLeod, Trimble, and MercuryGate, as well as with third-party systems like Project 44, FourKites, and Transporeon, among others. Boasting a stellar record of **99% uptime** and the capacity to handle hundreds of millions of transactions per month, PartnerLinQ emerges as your trusted companion in the digital expedition. It propels your logistics and transportation business into a future replete with boundless possibilities.



PartnerLinQ puts you in **complete control** of your supply chain connectivity by delivering **end-to-end visibility, control,** and **limitless flexibility**

One Platform, Infinite Possibilities: Transform Your Supply Chain with PartnerLinQ



Composable cloud-native Integration Platform:

Unmatched in agility and control, PartnerLinQ harnesses the native power of cloud technologies to deliver , seamless communication across your business ecosystem.



Operational Insights:

PartnerLinQ elevates insights by delivering operational visibility across your ecosystem, providing real-time analytics to your users, ensuring every decision is data- driven and insightful.



Exception Management:

PartnerLinQ can help you maintain a proactive stance with exception management, ensuring smooth process flow and prompt issue resolution, even bringing in business resources with human readable transactions, emails and alerting.



Business Process Automation:

Seamless L2I automation and autonomous workflows from Load Tender-to-Invoice. PartnerLinQ can determine and respond to tender timing, responding as indicated by the shipper, even advising your team in an automated acceptance notification, thereby fueling efficiency, opportunity, and accelerating revenue growth quickly and easily.



Modern Integration Platform:

PartnerLinQ's contemporary architecture seamlessly connects more than 77 TMS, WMS, and ERP platforms, integrating with them using more than 33 industry-leading protocols, standardized data structures, and common processing workflows. This streamlines the integration process for faster engagement with customers, carriers, and partners.



Seamless Partner Onboarding:

Our dedicated team is relentless in forging a global partner network, your partner network, just one more way PartnerLinQ distinguishes you from your competitors. 60% of PartnerLinQ customers self-support themselves. They can create and manage their own AS2, FTP, and SFTP profiles, as well as set up and customize trading partner profiles and maps on their own.

About PartnerLinQ

Built for industry experts, PartnerLinQ stands out as the premier supply chain platform that redefines digital connectivity, end-to-end visibility, and decision intelligence. PartnerLinQ's innovation empowers real-time decision-making, fosters collaboration with business partners, and enhances predictability within complex multi-enterprise supply chain networks.

Harnessing the power of cloud technology, PartnerLinQ ushers in a new era of supply chain efficiency, optimization, and performance that improves your bottom-line and nurtures sustainable growth.

For more information, visit:

info@partnerlinq.com

www.partnerlinq.com



Headquarters | Cranbury, NJ

4 Cedarbrook Drive,
Bldg. B,
Cranbury, NJ 08512

London

Visionet EMEA Limited,
Yoooserv, Dakota,
De Havilland Dr,
Weybridge KT13 0YP,
United Kingdom

Munich

Visionet Deutschland GmbH
Maximilianstrasse 13
80539 Munich, Germany

Toronto

2425 Matheson
Blvd. East, 8th Fl.
Mississauga,
ON L4W 5K4

PartnerLinQ